

Patti's News!



(206) 232-4453

February 2009

A Note From Our Director

Happy Valentines Day to all of our wonderful Patti's families! We hope you will enjoy this month of LOVE with your children. The classroom will be filled with lots of red, white, pink and glitter! And we will have fun making Valentines and sending them home the first two weeks of February.

We hope many of you were able to attend the Pre School Fair in January. We also hope many of you will be returning to Patti's next year.

During the month of February, we are encouraging everyone to communicate acceptance. It is one of the most difficult jobs to be a parent. Our little ones want love and consistency, and sometimes it is not easy. Communicating acceptance does not mean we always approve of their behavior. It just suggests loving them just as they are even when they spill juice all over the table.

Continue to have fun and enjoy each day. Spring is just around the corner.

- *Cathy Jankovich*

Mark Your Calendar

Just a reminder, Patti's Play Center will be **closed**
in observance of President's Day on
Friday, February 13 and Monday, February 16.

Register for the Fall!

Register NOW for the 2009-2010 school year!
Registration deadline is Monday, March 2.

Patti's has two sessions available for your children. The morning session (9am- Noon), caters to younger children, 2-3 year olds. The afternoon session (Noon- 3pm), for 3-5 year olds, is a great enrichment program to complement your child's preschool schedule. To know more about the two sessions, visit the Patti's website-
<http://www.pattisplaycenter.org/programs.html>

To register for the Fall, please print the registration procedures and form available on the website and follow the instructions on how to register-
<http://www.pattisplaycenter.org/reservations.html>. Paper copies are available in the classroom- just ask Cathy.

If you have any questions about registration, please feel free to contact our Registrar, Karen Schmid at (206) 232-0306 or kkuhn4@msn.com

Themes For This Month



Valentine's Day

Jungle Animals

Wine Tasting Fundraiser



Thursday, February 5th
7:00pm at Cellar 46
7650 SE 27th Street, MI

Space is still available!

Please come join us for an evening filled with a sumptuous array of appetizers, fine wine, and fellow Patti's friends! Cost is \$25.00 per person, payable in advance, and 10% of all wine sales benefit Patti's. Email Andrea Chatalas if you are interested!
chatali@comcast.net

If you are not able to join us for the event but would still like to participate in the fundraiser, you may stop by Cellar 46 during the day on February 5 to buy bottles. Please remember to mention Patti's and 10% of all purchases will be credited to Patti's.

Last Day of School

Due to the snow closures in December, we will be extending our school year by 3 days. The previous last day of classes was Thursday, June 11, however the new last day will be **Tuesday, June 16.**

Only if you are **unable** to take advantage of these extra days (Fri, Mon & Tues), please let Cathy know as soon as possible and you will not be charged. Otherwise, we will assume all the students who normally attend on these days will be present.

Gracias!

Thank you to **Gian Manhas** for the wonderful new train and all of the fun puzzles you donated to Patti's. The children love playing with them. We always appreciate you thinking of us.



Love Letters



If I could be a postman
for just one single time,
I'd choose to carry valentines
so lovely and so fine.
I would not mind the heavy load,
or my tired feet,
If I could scatter happiness
up and down the street.



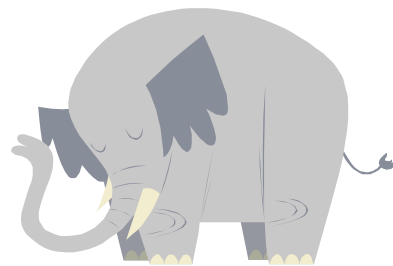
Birthday Celebrations!



Sofia Eng
Zara Eng
Sarah Hochberg
Nina Shakes



Take a Walk on the Wild Side



Through the jungle the elephant goes,
Swaying his trunk to and fro,
Munching, crunching, tearing trees,
Stamping seeds, eating leaves.
His eyes are small, his feet are fat,
Hey, watch out . . .
Don't squash that!

Love Potion

- ♥ 1 -12oz. Can Frozen Pink Lemonade
- ♥ 1- 12oz. Can Sprite or 7-Up
- ♥ 1 Cup Raspberry Sherbet

In a pitcher, mix the frozen lemonade concentrate with recommended amount of water. Next, add 1 cup of sherbet. Stir in the soda and serve. This frothy delight is love at first sip!